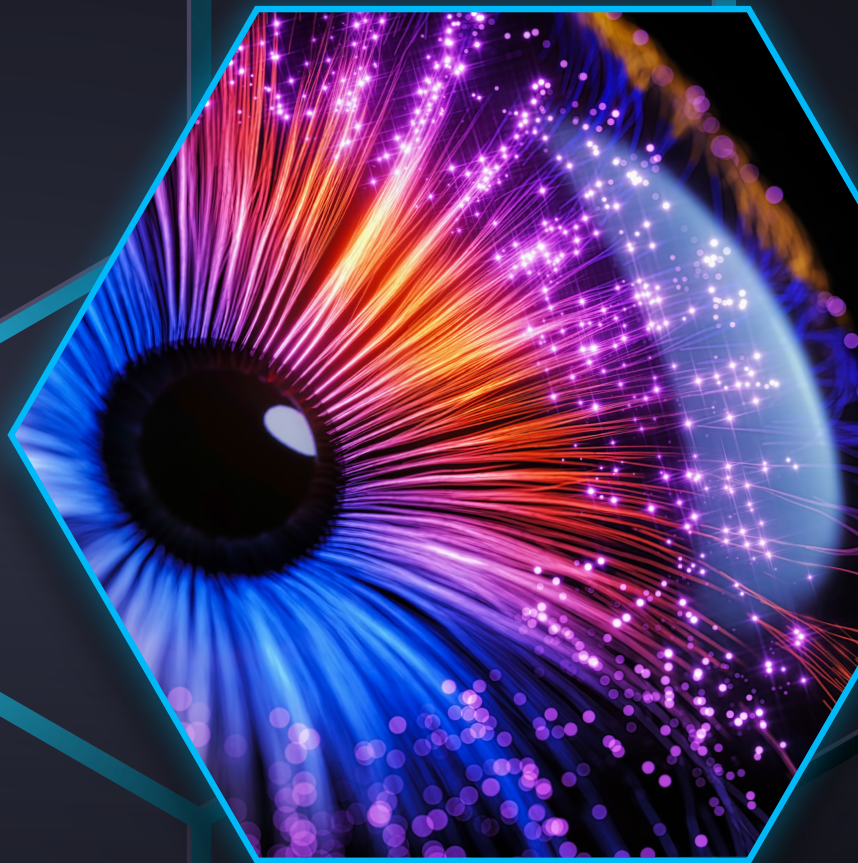


SYMPHIA



INTELLICENE
SECURITY // EVOLVED

The Symphia Platform by Intellicene

Intellicene is a leading global provider of intelligence-driven security solutions.

Utilizing advanced AI and predictive analytics, Intellicene's Symphia solutions can help anticipate, prevent and mitigate threats across industries. Our robust, open and scalable solutions are unified with advanced intelligence, transforming the standard security operations center (SOC) to an intelligent SOC. Intellicene provides a full range of applications across industries, governments, enterprises, critical infrastructure, transportation, retail and more.



Open, Robust and Scalable Platform

Our robust, open and scalable solutions are unified with advanced intelligence. Whether in the cloud or housed on a local server, our technology is nimble, adaptive and fully customizable.



Seamlessly Integrated Technology

Intellicene scales with its customers — we meet you where you are and grow with you. Legacy technology is easily integrated, so clients can maximize their investment and optimize our solutions.



Customized Security Solutions

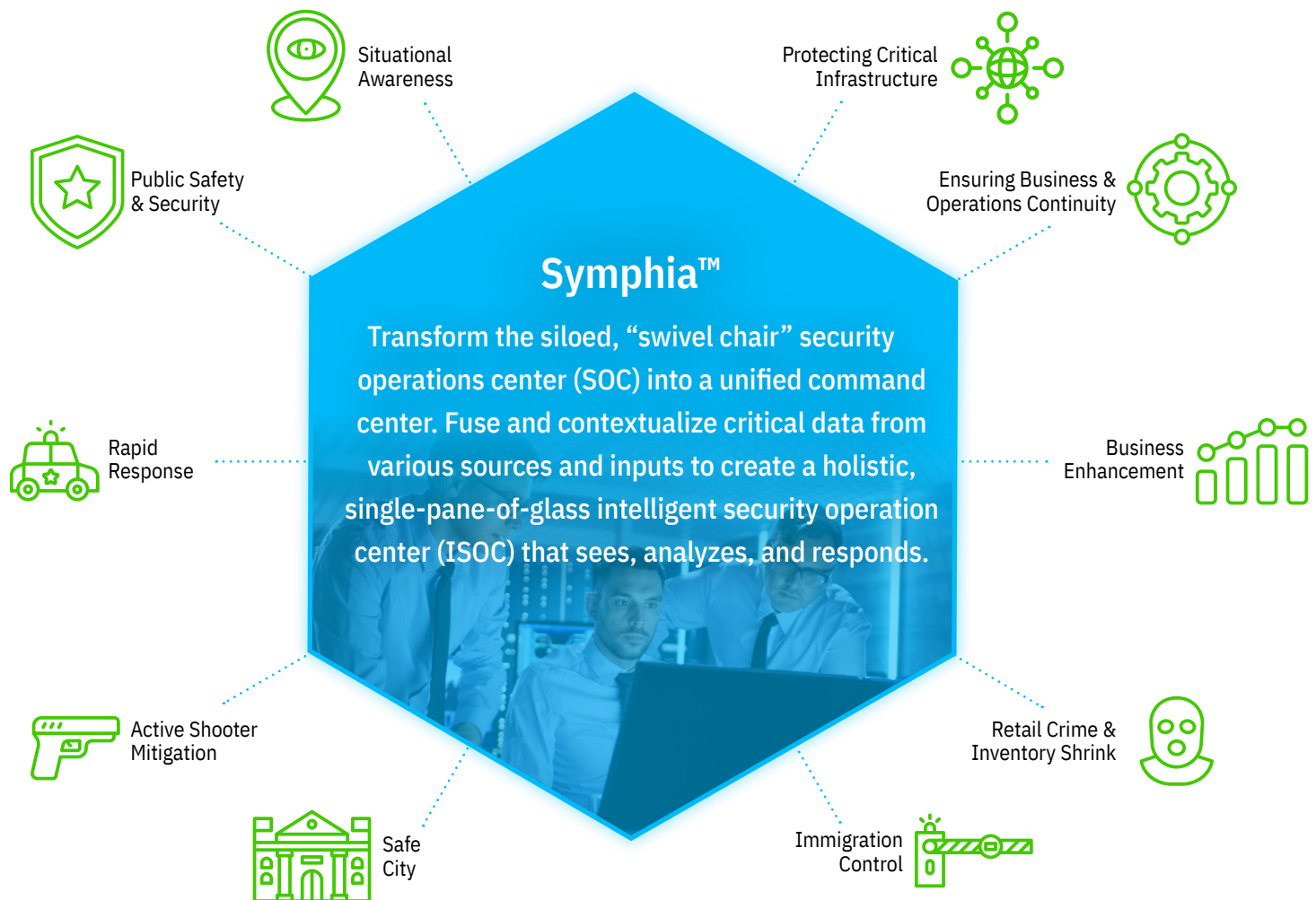
No two organizations are the same and neither are their security needs. Intellicene draws on deep expertise, prolific R&D, and a comprehensive global footprint to deliver innovative, customized and strategic security solutions for each individual client.

Intelligence-Powered Security

- Unify data from physical and IT security systems into a centralized console that provides holistic visibility across the operating environment
- Open, scalable and flexible architecture designed to integrate easily with existing technology and optimize performance
- Collect vast amounts of critical data and convert it into actionable intelligence
- Leverage cyber intelligence to anticipate threats and mitigate active incidents
- Provide accurate insight to make faster, better-informed decisions
- Enable a quicker, more effective response by dispatching the right resources, with the right equipment, to the right location for the best possible outcomes
- Simplify forensic investigations and reporting requirements

Intelicene Expertise

Intelicene's advanced security and intelligence solutions help organizations around the world overcome the most critical security challenges.



The Symphia Portfolio

The Symphia Platform by Intellicene delivers comprehensive and predictive situational awareness that gives security teams critical insight to act swiftly, definitively, and accurately. Powered by sophisticated intelligence, the Symphia suite of solutions is built on an open architecture and integrates easily with legacy systems, enabling organizations to optimize existing technology while improving the performance and scale of their security operations.

Symphia VMS



Symphia VMS features powerful, fully integrated video management tools, including automated system health monitoring and event responses, investigation management, and a software-based virtual matrix. The

solution also provides interactive facility maps, a powerful and intuitive video viewing interface, an ultra-thin client for remote/mobile users and more. Powered by sophisticated analytics, Symphia VMS makes video security more manageable, reliable and cost-effective. With Intellicene's actionable intelligence, operators can anticipate, prepare for and respond to potential threats or incidents. The open architecture is flexible and integrates easily with existing technology. Scale from a single location to a large, complex and geographically distributed operation quickly and easily. With Symphia VMS, you can see what's happening, everywhere.

Symphia One



Symphia One transforms the standard security operations center (SOC) to an intelligent security operations center (ISOC). Designed for single site, small to mid-size installations, the data-driven security management and response

system delivers all the advantages of a robust security solution at a fraction of the cost. Leveraging advanced AI and predictive analytics, Symphia One delivers actionable intelligence to help

predict, prepare and prevent potential threats and

mitigate active incidents. Increase

operational efficiencies, reduce overhead and build on existing technology with this innovative, flexible and scalable data-driven security management and response system. Symphia One enables a more concerted security approach for much better outcomes.

Symphia Control



Symphia Control collects, interprets and contextualizes massive amounts of data from multiple systems and inputs to deliver comprehensive situational awareness for greater command and control. Leveraging sophisticated

analytics, Symphia's situation management solution generates actionable intelligence that enables operators to make immediate decisions with up-to-the-minute information.

Predict, prepare for and prevent potential threats and mitigate active incidents – all from a single, centralized interface.

Increase operational efficiency by automating systems and processes, improve response times, ensure compliance and simplify forensic investigations and reporting requirements. Symphia Control enables physical security orchestration for quick and confident decision making.

Symphia NowForce



Sophisticated incident management and response technology fuses critical data and immediately provides comprehensive situational awareness that ignites action. Dispatchers, responders and other resources

can share insights— in real time— utilizing live and historical event data with GIS maps, geo-fencing, responder positions, reporter inputs, and other external sources. As data is continuously collected, processed and analyzed, security officials can coordinate efficient, appropriate and rapid incident response and enhanced field communications. Symphia NowForce helps you take decisive action when every second counts.

Symphia FaceDetect



Intelligent facial recognition analytics technology with one of the most accurate matching algorithms in the industry. Powered by AI, the versatile video analysis solution can provide immediate situational intelligence to

security operations. Symphia FaceDetect helps you track and alert on persons of interest appearing in video surveillance streams in real-time (or forensically), across multiple sites and thousands of cameras simultaneously. Identify multiple faces within a crowd, at any angle, with any light variation in seconds. Symphia FaceDetect helps you pick the right person out in a crowd.

Symphia Connect



Symphia Connect is a framework of integration types, that makes it easy for software vendors to connect their applications to the Symphia portfolio of solutions. With integrations, organizations can improve response

time, lower costs and increase operational efficiency.

Leveraging the open platform nature of the Symphia portfolio, the program allows any vendor to develop an integration that can enable a unidirectional or bidirectional flow of data between devices and safety and security systems, across the Symphia deployment. Symphia Connect offers three types of integrations — Managed Integrations, which are an integral part of the product and are designed, certified, maintained and supported by Intellicene Situational Intelligence Solutions;

Adaptive Integrations, which are project driven and designed by Intellicene; Certified Integrations, which are developed and maintained by our technology partners and certified by Intellicene. Symphia Connect literally connects the dots for better security solutions.

Symphia Insight



Symphia Insight provides a data visualization framework, enabling organizations to present historical data from **Symphia Control** and **Symphia One** into a live dashboard on any data visualization platform the organization

uses. The visual representation of the data creates value to the organization. It makes it possible to draw conclusions about the utilization of teams, the capacity and distribution of events, and exposes potential and existing risks and problems. By obtaining meaningful interpretation of data, organizations can transform their Security Operations Center (SOC) into an Intelligent Security Operations Center (ISOC).



Professional Services

The Intellicene Services team delivers outstanding results for clients. We are committed to building customers for life and provide dedicated support, certified Project Management, and expert Field Engineering and Solution Architects to a variety of projects and initiatives globally. We support some of the largest and most complex deployments in the world and offer centralized hosting options. All our Project Managers are PMP-certified and the Project Management Office (PMO) methodology is the most proven enterprise-class, mission critical methodology in the market. Our Professional Services team has extensive capabilities to tackle even the most complex deployments, anywhere in the world. Our Customer Success Managers immerse themselves into every aspect of our clients' projects, as well as their future goals and initiatives to ensure their success. We provide comprehensive service, support and training 24 hours/day, 7 days/week.

The Intellicene Promise

For more than 25 years, Intellicene has cultivated the brightest minds in security and intelligence and applied this expertise towards a dynamic, forward-thinking corporate strategy dedicated to innovation and growth.

We serve more than 1,500 customers globally across all industry sectors, including transportation, critical infrastructure, government, safe city initiatives, enterprise, retail and healthcare.

We are committed to building customers for life, investing heavily in R & D and partnering with best-in-class technical and channel partners to ensure our clients' success. Trusted and deployed globally, Intellicene Situational Intelligence Solutions is committed to protecting what matters most: people, property and the continuity of business and operations.

Depend on Intellicene

Clients worldwide depend on Intellicene's award-winning solutions to protect what matters most.

- Enterprises
- Campuses
- Hospitals
- Corporate Headquarters
- Critical infrastructure
- Federal and state agencies
- Law Enforcement
- Fire and EMS Departments
- Airports
- Sea Ports
- Train Stations
- Transportation Infrastructure
- Public Buildings

Schedule an Online Demo Today

Intellicene.com

insidesales@Intellicene.com

+1 888-747-6246



INTELLICENE
SECURITY // EVOLVED

About Intellicene

Intellicene is a global leader in security analytics software that empowers governments and enterprises. Our open software fuses, analyzes and visualizes disparate data sets at scale to help security organizations find the needles in the haystacks. Over 1,000 government and enterprise customers in more than 100 countries rely on Intellicene's solutions to accelerate security investigations and connect the dots to successfully identify, neutralize, and prevent threats to national security, business continuity and cyber security.

About Intellicene SIS

Intellicene helps enterprises and governments manage complex security operations, fuse information from various sources, analyze vast amounts of data, and gain insight for better incident management, response and investigations. With our solutions, organizations can see what's happening across their operations, make quick and confident decisions for decisive actions. Powered by our Symphia portfolio of solutions, we help our customers orchestrate better outcomes to protect what matters most.

Use of these products or certain features may be subject to applicable legal regulation. The user should familiarize itself with any applicable restrictions before use.

Unauthorized use, duplication, or modification of this document in whole or in part without the written consent of Intellicene Software Ltd. is strictly prohibited. By providing this document, Intellicene Software Ltd. is not making any representations regarding the correctness or completeness of its contents and reserves the right to alter this document at any time without notice. Features listed in this document are subject to change. Contact your Intellicene representative for current product features and specifications. All marks referenced herein with the ® or TM symbol are registered trademarks or trademarks of Intellicene Software Ltd. or its subsidiaries. All rights reserved. All other marks are trademarks of their respective owners. © 2022 Intellicene Software Ltd. All rights reserved worldwide. INTEL0015.221212