

INTELLICENE FACEDETECT

IDENTIFY



INTELLICENE
UNIFYING SECURITY, ENABLING ACTION

Intellicene FaceDetect. Facial Recognition for the Real World.

Apply Powerful Live and Recorded Video-Based Deep Learning Analysis to Quickly and Accurately Find Persons-of-Interest In Real-World Situations.

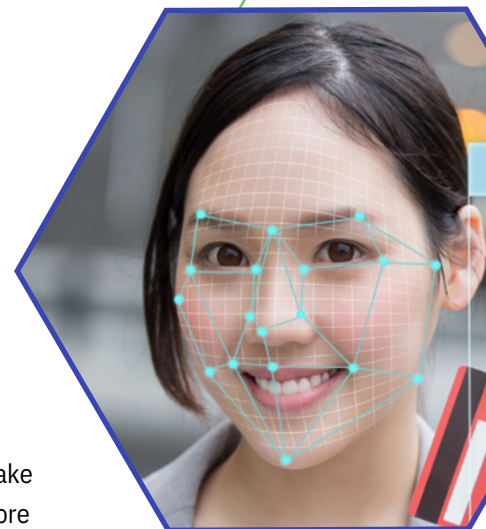
Intellicene™ FaceDetect is a powerful and versatile video analysis solution that can provide situational intelligence to security operations centers through powerful facial recognition technology.

The system can detect, track and alert on persons-of-interest appearing in video surveillance streams in real-time, across multiple sites and thousands of cameras simultaneously, returning results in seconds on live video analysis. This tool is easy to implement and highly effective, designed with deep learning technology to help mitigate risks in real world environments.

Intellicene FaceDetect addresses over 12 real-world challenges that organizations face, all while performing real-time, n:n comparison against multiple databases and watchlists.

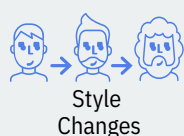
The system's real-time and forensic-search recognition capabilities and utilization of large detection databases can make investigations faster and more efficient.

Armed with this information security operators can utilize Intellicene FaceDetect to quickly identify persons of interest.



12 Challenges Intellicene Can Help You Overcome to Succeed In Your Environment

Active Avoidance



Style Changes



Disguised – Including Face Masks*

Natural

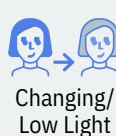


Aging (up to 20 years)



Ethnicity-Independent

Situational



Changing/ Low Light



Workwear



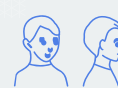
Multiple People in a Scene



Brief View (<1 second)



Indoor/ Outdoor



Angle/ Partial View

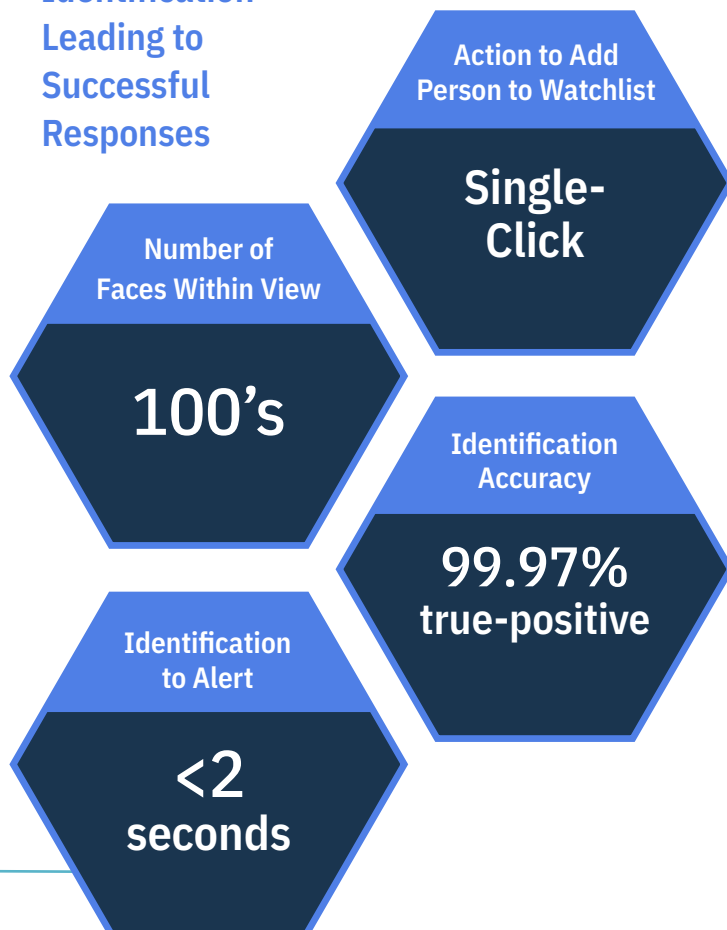


PTZ



Mobile/ Wearable Input

Fast, Accurate
Identification
Leading to
Successful
Responses



Fast and Accurate Recognition In Any Condition

The system features one of the highest true positive rates and lowest false positive rates available. The accuracy of the system has been successfully experienced in real-world situations such as varying profile angles, crowded fields of view, difficult lighting environments, highly diverse subject matter, and when people only appear briefly, even down to 1/10th of a second.

Identifying Faces from Any Angle, with Low Light, Using the Lowest Required Face Image Size in the Industry

Intellicene FaceDetect enables customers to view many faces within a field of view, even proving effective with face images as small as 45x45 pixels. At times it's difficult to capture individual faces looking straight into a camera; Intellicene FaceDetect is designed to excel at identifying multiple faces within a field of view, at extreme angles and light variations, even disguised or wearing a face mask*. This helps customers easily match an identified person of interest to nearly any face appearing in a camera's field of view.

Mission-Critical Force Multiplier to Protect Against Universal Threats

Used in real-time or forensically, Intellicene FaceDetect can compare live or recorded video to generate a scalable tool that works around the clock to identify and alert on specific persons-of-interest now and into the future.

GDPR and Privacy

Intellicene FaceDetect has a wide range of capabilities that can be configured and used to assist in complying with the GDPR, these include Privacy Mode, Watchlist Control, Blurring and User Rights Access Control.





One of the most accurate
matching algorithms
in the industry



One of the highest
true positive rates / lowest
false positive rates



Technology designed to
be effective in real-life
situations



Fast and easy to
deploy utilizing your
existing IP cameras

Quick and Easy Deployment Yields Incredible Results

Build and Leverage Highly Flexible Security Watchlists Customers can build their security persons-of-interest list by importing basic, static facial images as well as video surveillance still images detected through video analysis, personal, or social media images. By aggregating these images, customers can label and add notes to the individual profiles and use them for future identification reference.

With Intellicene FaceDetect an operator can also use those images to determine past sightings—a valuable capability. These same capabilities allow customers to create Approved List to identify known, trusted or verified people.

Quickly Deploy FaceDetect on any IP Camera, with Cost-Efficient Hardware

Intellicene FaceDetect is fast and easy to deploy. It was designed to be cost efficient and can work seamlessly with your existing equipment and network architecture to capture and analyze multiple streams of video from any IP camera, including PTZ. In addition, a GPU load balancing mechanism assures optimized utilization of resources.

Intellicene FaceDetect offers organizations an intelligent methodology to help keep people, property and assets safe by confidently mitigating the risk posed by suspicious and identified nefarious-behaving individuals

Ease Of Deployment To Minimize Set-Up Cost:

Per Camera Set-Up Time	<1 hour
System Scale	<2 seconds
Open Integration to any camera	single-click

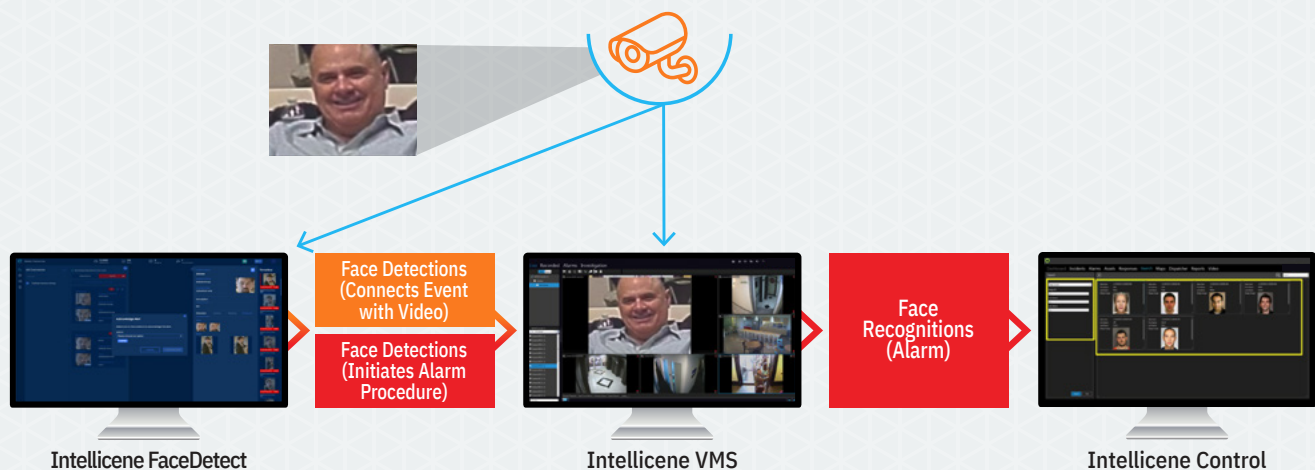




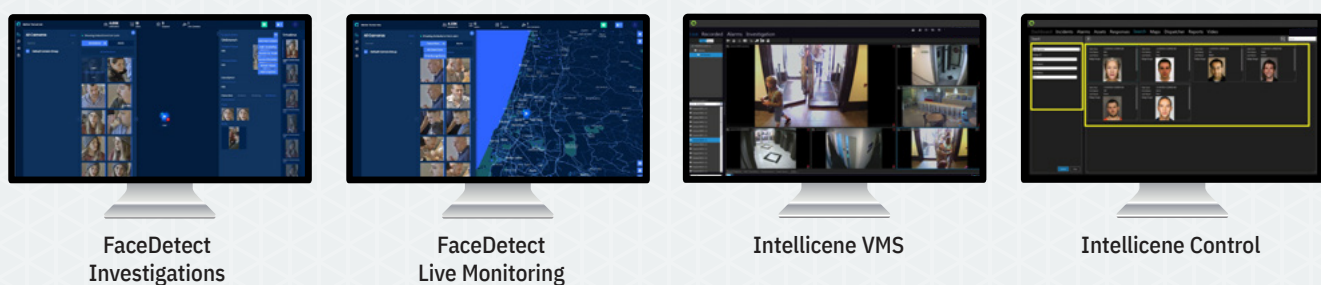
Integrate with Intellicene's Security Operations Center

Intellicene FaceDetect was designed to work seamlessly within the security operations center. Live detections from recognition matches can be easily shared with Intellicene VMS, and if rules dictate, can be escalated to the Intellicene Control. This advantage is significant in enhancing the ability of operators to respond accurately to an incident using Intellicene NowForce to assign the closest responder to the scene.

Incident Handling Process



Intellicene Intelligent Security Operations Center



A powerful and versatile way to complement the ISOC.

Governments and enterprises can recognize, alert and act upon identification of persons-of-interest. With seamless integration to the Intelligent Security Operations Center, Intellicene FaceDetect provides real-time and forensics tools, ensuring operators are equipped to protect what matters most.



Schedule an Online Demo Today

Intellicene.com • insidesales@Intellicene.com • +1 888-747-6246



About Intellicene

Intellicene is a global leader in security analytics software that empowers governments and enterprises. Our open software fuses, analyzes and visualizes disparate data sets at scale to help security organizations find the needles in the haystacks. Over 1,000 government and enterprise customers in more than 100 countries rely on Intellicene's solutions to accelerate security investigations and connect the dots to successfully identify, neutralize, and prevent threats to national security, business continuity and cyber security.

Use of these products or certain features may be subject to applicable legal regulation. The user should familiarize itself with any applicable restrictions before use.

Unauthorized use, duplication, or modification of this document in whole or in part without the written consent of Intellicene Software Ltd. is strictly prohibited. By providing this document, Intellicene Software Ltd. is not making any representations regarding the correctness or completeness of its contents and reserves the right to alter this document at any time without notice. Features listed in this document are subject to change. Contact your Intellicene representative for current product features and specifications. All marks referenced herein with the ® or ™ symbol are registered trademarks or trademarks of Intellicene Software Ltd. or its subsidiaries. All rights reserved. All other marks are trademarks of their respective owners. © 2024 Intellicene Software Ltd. All rights reserved worldwide. INTELLICENE0140.250325