

INTELLICENE FACEDETECT PORTABLE CONCEPT

IDENTIFY



INTELLICENE
UNIFYING SECURITY, ENABLING ACTION

Intellicene FaceDetect. Facial Recognition in the Field.

A field command center requires the same functionality as a fixed operations center, but usually in a smaller form factor, that can be mobilized and self-sustained. Security teams maintaining security operations in the field can greatly benefit from immediate identification of persons of interest in their near surroundings. They can utilize Intellicene FaceDetect in the field for real time collection & alerts in covert and overt operations.

This solution is perfect for those clients where mobility is important, for example, a security detail responsible for protecting a high-level asset that travels frequently. With the Intellicene FaceDetect portable concept the deployment can be moved easily between locations as needed, to detect, track and alert on persons of interest. The video feed to the system can be provided from video cameras deployed at the scene or via wearable cameras worn by the security team, to help mitigating the risk to that important asset, regardless of location.

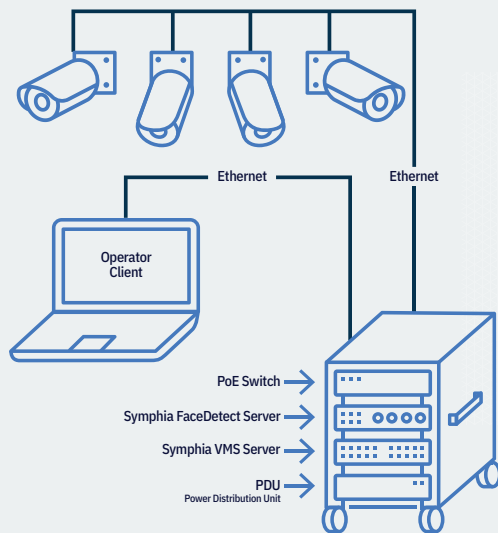
- Command & Operational vehicles
- Ad-hoc, quick deployments
- Dignitary protection & special events
- One system-multiple uses
- Data collecting
- Watch list alerts
- Forensic search



Ready to Use, Everywhere.

With this plug and play concept, users get everything Intellicene's FaceDetect solution offers in a streamlined portable deployment format. According to the specific use case requirements, a commercial-grade equipment rack on wheels houses Intellicene FaceDetect and Intellicene VMS servers, a PoE+ switch and a PDU that support PoE powered cameras to deliver an all-in-one solution.

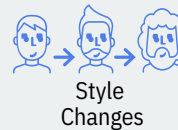
Intellicene FaceDetect Portable Concept



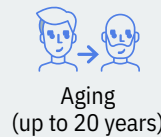
12 Challenges Intellicene FaceDetect Can Help Overcome to Succeed in Your Environment.

Intellicene FaceDetect addresses over 12 real-world challenges that organizations face, all while performing real-time n:n comparison against multiple databases and watchlists. The system's real-time and forensic-search recognition capabilities and utilization of large detection databases can make investigations faster and more efficient. Armed with this information security operators can utilize Intellicene FaceDetect to quickly identify persons of interest.

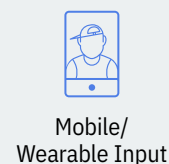
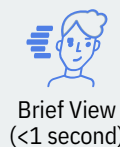
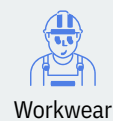
Active Avoidance



Natural



Situational



Utilize Real-Time Intelligence to Secure Your Environment

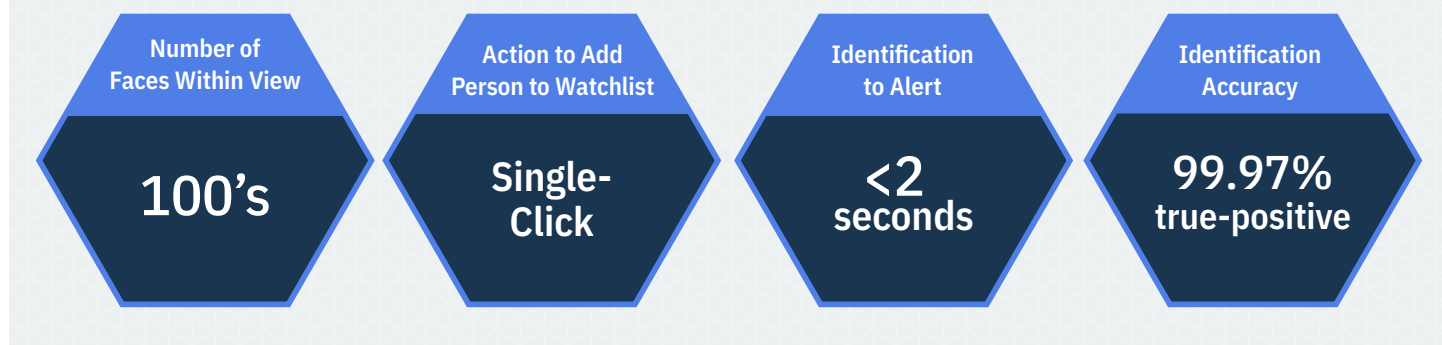
FaceDetect offers new level of visibility that scales the effectiveness of an organization's security operations by quickly identifying faces and comparing those facial images to a customer-driven database of people of interest, known as a watchlist (both POI and Approved Lists), to create alarms and events. Hundreds of faces can pass through the field of view of any camera across multiple sites and be identified as a match to those predetermined persons of interest.



One Of the Most Accurate Matching Algorithms in the Industry

The system features one of the highest true positive rates and lowest false positive rates available. The accuracy of the system has been successfully experienced in real-world situations such as varying profile angles, crowded fields of view, difficult lighting environments, highly diverse subject matter, and when people only appear briefly, even down to 1/10th of a second.

Fast, Accurate Identification Leading to Successful Responses



Identifying Faces from Angles, with Low Light, Using the Lowest Required Face Image Size in the Industry

FaceDetect enables customers to view many faces within a field of view, even proving effective with face images as small as 45x45 pixels. At times it's difficult to capture individual faces looking straight into a camera; Intellicene FaceDetect is designed to excel at identifying multiple faces within a field of view, at any angle, with any light variation. This helps customers easily match an identified person of interest to nearly any face appearing in a camera's field of view.

Mission Critical Force Multiplier to Protect Against Universal Threats

Used in real-time or forensically, deployed as a fixed or a portable solution, Intellicene FaceDetect can compare live video with recorded imagery to generate a scalable tool that works around the clock to identify and alert on specific persons-of-interest and assist the security organization in protecting people, property and assets.



Schedule an Online Demo Today

Intellicene.com • insidesales@Intellicene.com • +1 888-747-6246



About Intellicene

Intellicene is a global leader in security analytics software that empowers governments and enterprises. Our open software fuses, analyzes and visualizes disparate data sets at scale to help security organizations find the needles in the haystacks. Over 1,000 government and enterprise customers in more than 100 countries rely on Intellicene's solutions to accelerate security investigations and connect the dots to successfully identify, neutralize, and prevent threats to national security, business continuity and cyber security.

Use of these products or certain features may be subject to applicable legal regulation. The user should familiarize itself with any applicable restrictions before use.

Unauthorized use, duplication, or modification of this document in whole or in part without the written consent of Intellicene Software Ltd. is strictly prohibited. By providing this document, Intellicene Software Ltd. is not making any representations regarding the correctness or completeness of its contents and reserves the right to alter this document at any time without notice. Features listed in this document are subject to change. Contact your Intellicene representative for current product features and specifications. All marks referenced herein with the ® or ™ symbol are registered trademarks or trademarks of Intellicene Software Ltd. or its subsidiaries. All rights reserved. All other marks are trademarks of their respective owners. © 2025 Intellicene Software Ltd. All rights reserved worldwide. INTELLICENE0231.251211